



## Volume Estimator

### Table of Contents:

1. Introduction .....	2
2. Configuration .....	3
a. Average size Panel .....	3
i. Access the parameters section .....	3
ii. Click on Volume Estimator in the menu:.....	3
iii. Edit the Average Size Panel:.....	3
iv. Save your changes.....	3
b. Force Show Volume Estimator.....	3
i. Access the parameters in the GenMix application. ....	3
ii. Choose the Volume Estimator from the menu .....	4
iii. At the bottom of the page, tick the checkbox “Force Show Volume Estimator” .....	4
3. Step-by-step details .....	4
a. From Mixing System: .....	4
i. Access the Mixing System .....	4
ii. Search for a formula or a Panel number.....	4
iii. Pick the formula .....	4
iv. Choose a paint line.....	4
v. To the right, click on the Volume Estimator button: .....	4
vi. The “Panel picker” page opens. To right, select the car size: .....	5
vii. Click on the panels that need to spray.....	5
viii. At the top of the page you will find the information below:.....	6
ix. Once you finish, save your choice:.....	6
x. Volume in liters and number of panels in the Mixing System. ....	6
xi. Send to Job Management. ....	7
b. From Ready to Spray.....	7
i. Access the Ready to spray .....	7
ii. Fill all the fields (Group, Product, type, Degree, etc...).....	7
iii. Click on the Calculator button.....	7



iv.	Click on the Volume Estimator button:.....	7
v.	Select the panels that should be sprayed, then save .....	8
vi.	The Volume in liters and the number of panels will be updated .....	8
4.	Contact information .....	8

## 1. Introduction



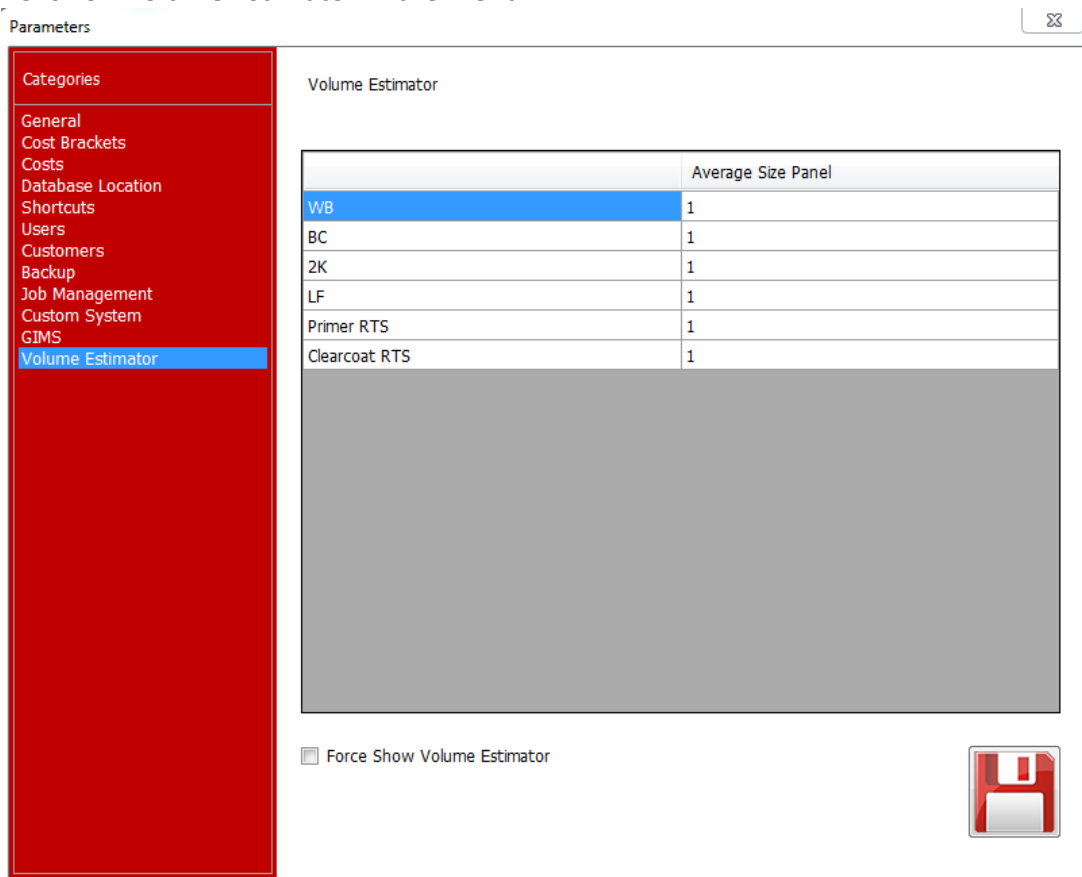
The Volume Estimator is a new feature GenMix. It suggests the required volume to spray a set of panels. This update, allows you to select the vehicle type that you would like to spray.

## 2. Configuration

### a. Average size Panel

Edit the average size of panels according to the paint line and Ready to spray group:

- i. Access the parameters section
- ii. Click on Volume Estimator in the menu:



### iii. Edit the Average Size Panel:

By default, the average is entered. To edit them, click on the default number, then enter a new value.

### iv. Save your changes

### b. Force Show Volume Estimator

The GenMix gives the option to open the Volume Estimator automatically once you select a paint line. To enable this feature:

- i. Access the parameters in the GenMix application.



- ii. Choose the Volume Estimator from the menu
- iii. At the bottom of the page, tick the checkbox “Force Show Volume Estimator”.



### 3. Step-by-step details

There are TWO ways to access the Volume Estimator:

- a. From Mixing System:
  - i. Access the Mixing System
  - ii. Search for a formula or a Panel number.
  - iii. Pick the formula
  - iv. Choose a paint line.
  - v. To the right, click on the Volume Estimator button:

**MIXING SYSTEM Pro**

Vehicle Make: MERCEDES Color Description: WASSERBLAU Tone:

Color Code: 321 Year: 00-00 M. VOC 679.1 grams/liter Date: Apr 1, 2008

Panel no.: 14741 Kgs: 1.0561 Liters: 1.000 C. VOC 679.1 grams/liter Cost: 0

Available Paint Lines:

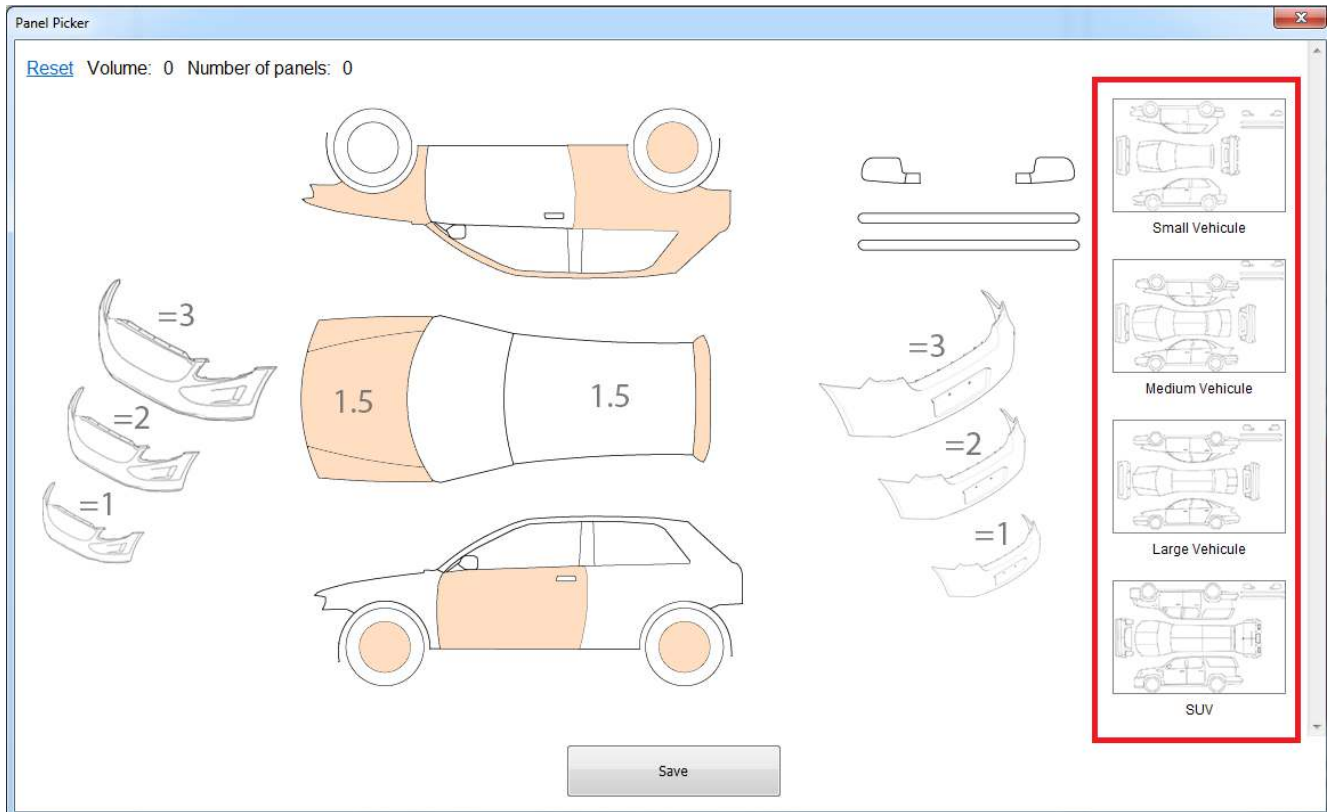
- 2K
- BC (1st in 2)
- WB (1st in 2)

Code	Description	Quantity	Qty Cumulative	Actual Quantity	Quantity Difference
702	BASECOAT WHITE	504.5	504.5	0.0	0.0
721	BASECOAT LUMINOUS GREEN	333.5	838.0	0.0	0.0
717	BASECOAT GREENISH BLUE	145.4	983.4	0.0	0.0
781	BASECOAT CARBON BLACK	72.7	1056.1	0.0	0.0

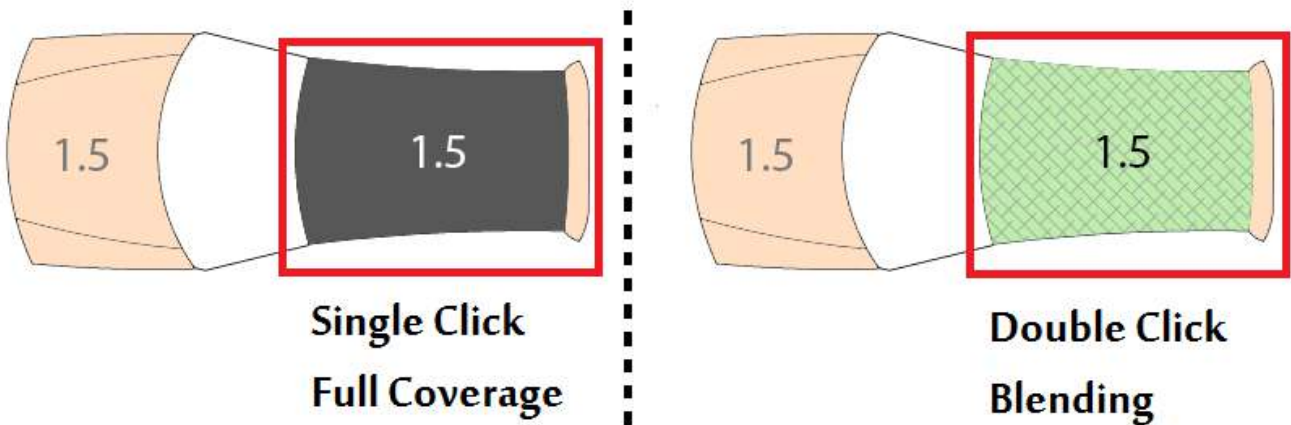
Alternative Description | Details | Color Box Info | Comments  
USE GRAY PRIMER



vi. The “Panel picker” page opens. To right, select the car size:



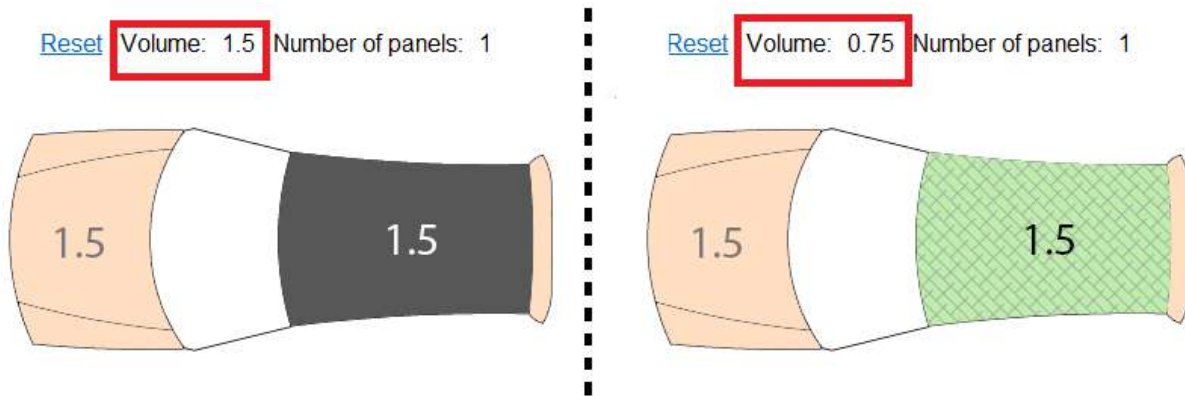
vii. Click on the panels that need to spray.  
A single click on a panel is for full coverage, double click is for blend panels:





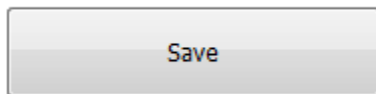
viii. At the top of the page you will find the information below:

- Volume: displays the total volume selected based on the values entered in the Parameters (review: [Configuration](#)) and the number of panels. If you select a panel for blending, the volume will be half the volume when it is in full coverage.



- Number of panels: shows the total number of panels to be sprayed.
- Reset: you can click this button to clear all selected panels and start again.

ix. Once you finish, save your choice:



x. Volume in liters and number of panels in the Mixing System.

Once you save, the volume in liters will be modified as selected in the Panel Picker page.

Also, the number of panels will appear at the top right of the page:

Vehicle Make: MERCEDES Color Description: WASSERBLAU Tone: # Panels: 4

Color Code: 321 Year: 00-00 M. VOC: 679.1 grams/liter Date: Apr 1, 2008

Panel no.: 14741 Kgs: 3.6962 Liters: 3.5 C. VOC: 679.1 grams/liter Cost: 0

Available Paint Lines:

- 2K
- BC (1st in 2)
- WB (1st in 2)

Code	Description	Quantity	Qty Cumulative	Actual Quantity	Quantity Difference
702	BASECOAT WHITE	1765.7	1765.7	0.0	0.0
721	BASECOAT LUMINOUS GREEN	1167.2	2932.9	0.0	0.0
717	BASECOAT GREENISH BLUE	508.9	3441.8	0.0	0.0
781	BASECOAT CARBON BLACK	254.4	3696.2	0.0	0.0



xi. Send to Job Management.

If the mix is sent to the Job Management, the GenMix updates automatically the volume and number of panels to the same as the ones selected in the Volume Estimator:

The screenshot shows the 'Add Job' form. The 'Additional Information' section is highlighted with a red box. It contains the following fields:

- Number of Sprayed Panels: 4.00 (with a car icon)
- Volume of sprayed panels: 3.50

Below this is the 'Insurance Information' section with the following fields:

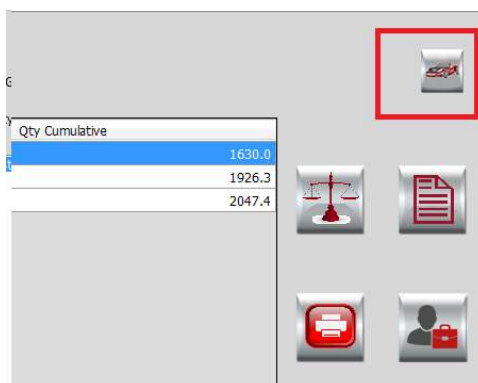
- Claim Number
- Location
- Date
- Insurance Name
- Custom Identifier

A save icon is located at the bottom right of the form.

You can click on the car button, to update your selection.


b. From Ready to Spray

- i. Access the Ready to spray
- ii. Fill all the fields (Group, Product, type, Degree, etc...)
- iii. Click on the Calculator button
- iv. Click on the Volume Estimator button:





- v. Select the panels that should be sprayed, then save
- vi. The Volume in liters and the number of panels will be updated

	Qty of liters	Cost	0.0	...	C. VOC	247.2 grams/liter
	Base Product	3.333	Kgs	6.824		746.8 grams
	Ready to Spray	4.5	# Panels	4	M. VOC	166 grams/liter

Code	Description	Quantity	Qty Cumulative
03362	VOC RAPID PRIMER GREY	5432.8	5432.8
H01522	VOC HARDENER FAST	987.6	6420.4
S025	VOC 2K UNIVERSAL REDUCER	403.6	6824.0

#### 4. Contact information

For more information or comments, please do not hesitate to contact the General Paint Software support team by email at [support.it@generalpaint.biz](mailto:support.it@generalpaint.biz)

Or by phone at +961 9 925 990

We are available from 8:00AM (GMT) to 8:00PM (GMT).